

# CRITICAL MASS CALLS FOR POSTERS!

THE ROYAL INSTITUTION OF GREAT BRITAIN, LONDON

19TH + 20TH OCTOBER

Critical Mass is *the* conference for anyone interested in social value, enterprise, investment and innovation.

This year, taking inspiration from our venue at the **Royal Institution** of Great Britain (the home of science in the UK), we're looking for creative and cutting edge research being done in the social value, social enterprise, social investment and social innovation spaces.

We'll be exhibiting a range of posters presenting research projects and ideas.

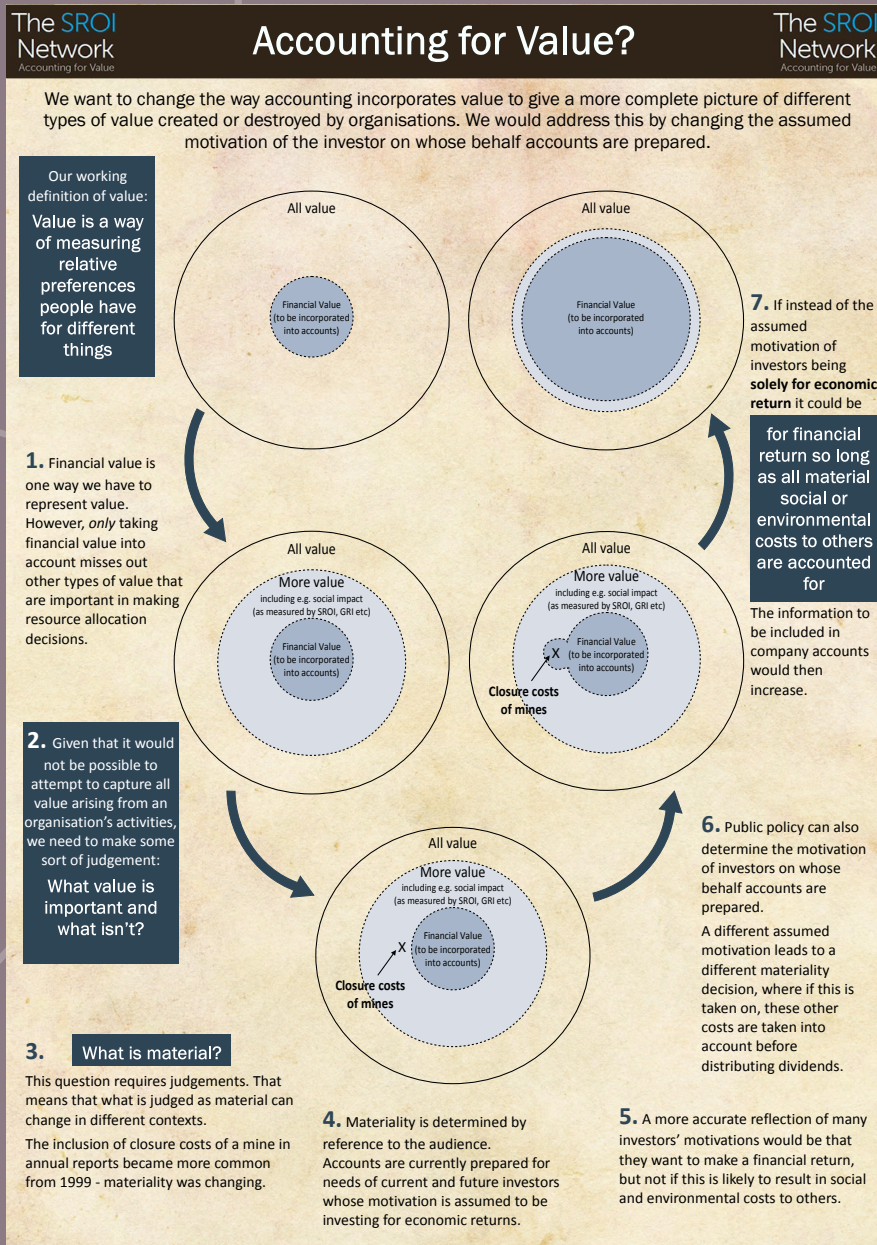
**Posters should;**

- Be A0 (portrait)
- Explore relevant themes and subjects in Critical Mass (see [criticalmass.london/topicsthemes](http://criticalmass.london/topicsthemes))

This is a great opportunity for you to showcase your work to an international audience engaged in social value across the world.

If you're interested, please email Helen on:-  
[helen.campbell@socialvalueuk.org](mailto:helen.campbell@socialvalueuk.org) by **15th September** with brief details of your poster topic (approx. 100 words).

You can see a relevant example below:



Critical Mass takes place **19th and 20th October** at **The Royal Institution in London**.

Student tickets are available for those in full time education – costs are only **£125 +VAT** for two full days of interesting conversation, collaboration, masterclasses and debate.

Visit [criticalmass.london/tickets](https://criticalmass.london/tickets) to purchase your ticket

If you think your university or institution may be interested in purchasing group tickets for the event please get in touch with the team on:-

[criticalmass@matterandco.com](mailto:criticalmass@matterandco.com)